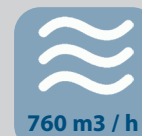


120

DrumFilter

Serie



Drum filter 120
serie

4 Models

Frame



Input by pipe



Stainless style tank



HDPE tank



Drum filter 120

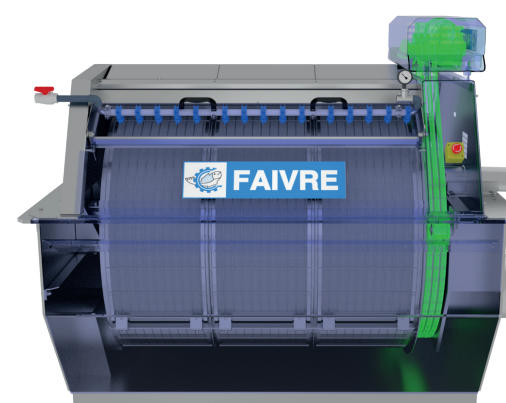
Flow rate up to 211 l / s (760 m3 / h) at 100 µ.

With a 120cm diameter drum, the Rotoclean 120 can treat large quantities of water. It is available in 5 sizes (3, 6, 9, 12 and 15 plates).

The Rotoclean 120 finds its place in closed circuits in both freshwater and seawater.

Built entirely in stainless steel and technical plastic, it is not very sensitive to corrosion.

Its 120 cm diameter drum rotates at 5 revolutions / min.



BDS simple, reliable and robust system.

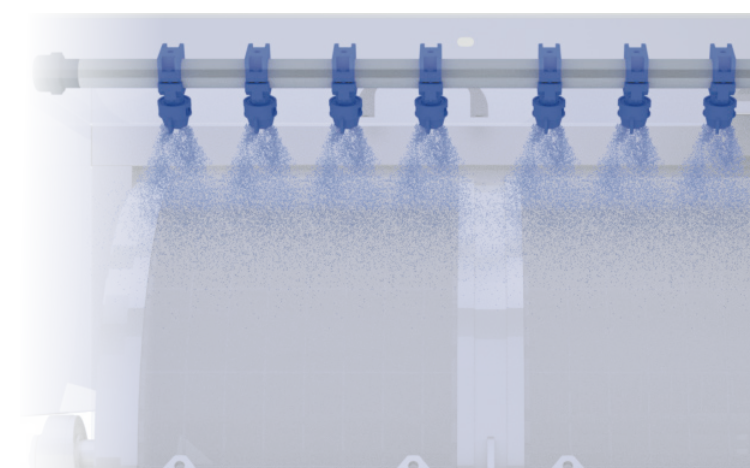
Rotoclean 120 drum filters benefit from the BDS system (Belt Drive & Support system). The motor, ideally placed on top of the drum filter, drives and supports the drum with one or more belts.

In 20 years of experience, this system has shown all its advantages:

- Soft start by nature (does not require a soft start with a frequency converter)
- Reliability over time (more than 5 years without maintenance)
- Transmission does not break if the drum jams (for example: if an object enters the drum)

Rinsing ramp with optimized water consumption and pressure.

The pressure of the nozzles has been optimized in order to obtain a perfect rinsing of the fabrics without damaging them.

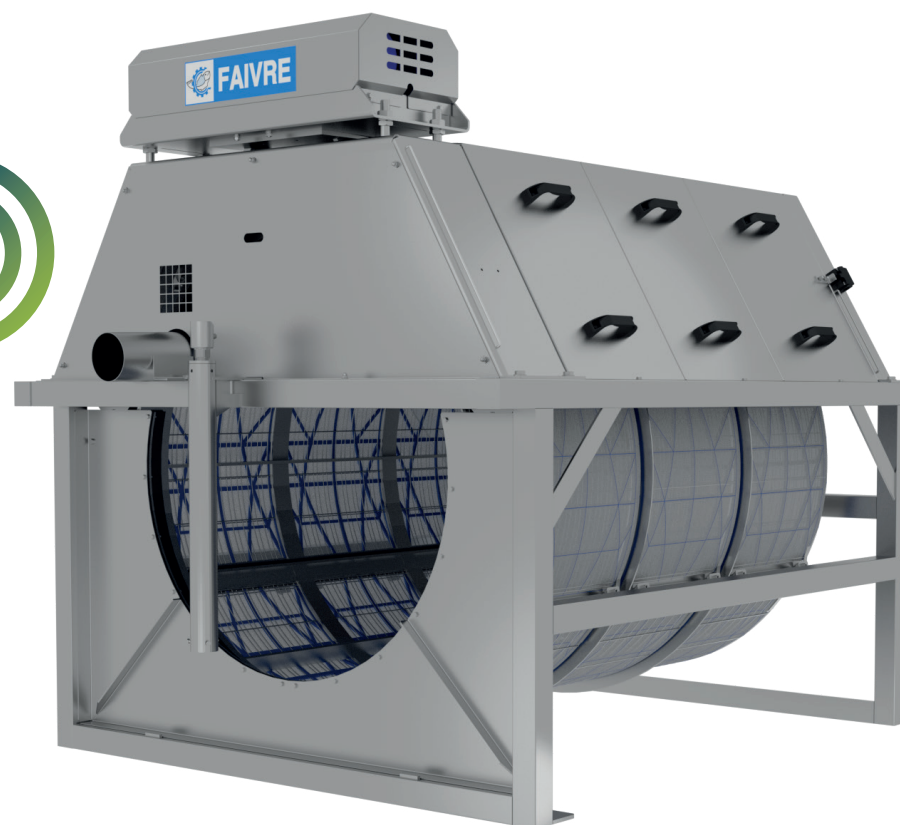


Our Rotoclean 120 drum filters are compatible with :

- Smart filter technology (page 10)
- New Spiderplate® (page 12)

Smart filter

SPIDERPLATE

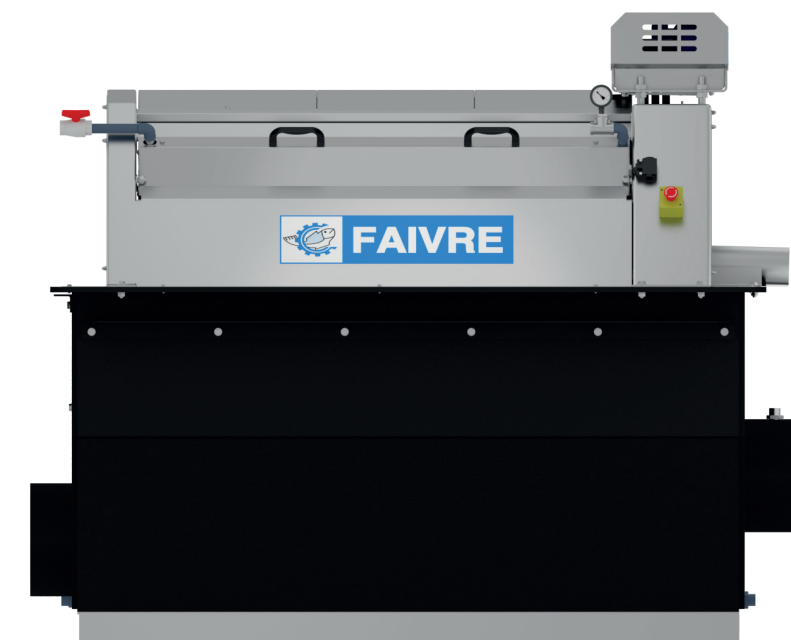
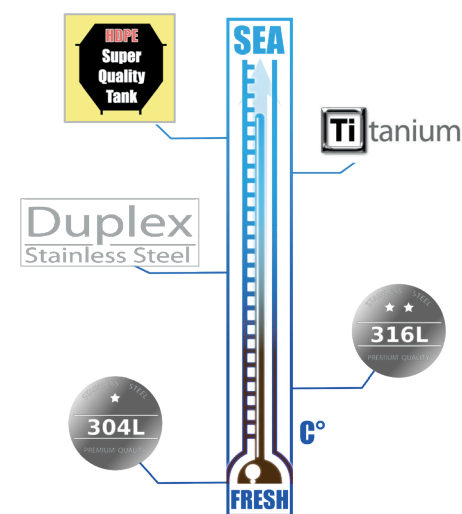


Specifications

Model	Ø Inlet -outlet in standard	Motor power	Filter surface	Number of plates	Sludge outlet diameter	Number of Spray nozzles
3 - 120	Ø 315 mm (62l/s max.)	370 W	1,29 m²	3	Ø 110 mm	5
6 - 120	Ø 350 mm (79l/s max.)		2,58 m²	6		10
9 - 120	Ø 400 mm (105l/s max.)		3,87 m²	9		15
12 - 120	Ø 400 mm (105l/s max.)		5,16 m²	12		20



- 1 - Drum
- 2 - Removable stainless steel covers
- 3 - Drum drive motor under stainless steel cover
- 4 - Level probe
- 5 - Sludge outlet
- 6 - Stainless steel tank
- 7 - Rinsing manifold pressure gauge
- 8 - Rinsing ramp



High quality stainless steel construction.

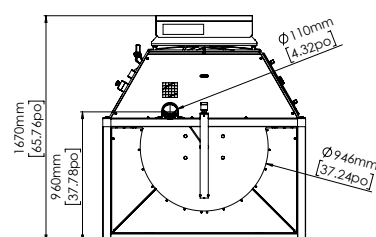
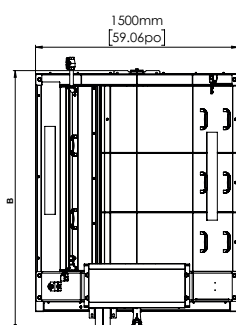
- Exclusive use of high quality stainless steel made in northern Europe (Norway, Finland, Sweden)
- Stainless steel AISI 304L (4301) for fresh water as standard
 - Stainless steel AISI 316L (4404) for sea water as standard
 - Stainless steel DUPLEX (2205), SUPER DUPLEX (2507), HDPE and Titanium for hot sea water.

The CCPUs of the material constituting your filter order can be supplied to you on request.

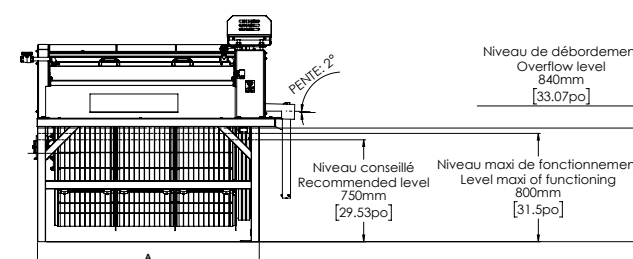
• Frame



	3-120		6-120		9-120		12-120	
Net weight	340 kg 749 lbs		420 kg 926 lbs		498 kg 1098 lbs		588 kg 1296 lbs	
Unit	cm	in	cm	in	cm	in	cm	in
Width	150	59	150	59	150	59	150	59
Height	167	66	167	66	167	66	167	66
Length (A)	76	30	120	47	164	64	208	82
Length (B)	104	41	148	59	192	76	236	93



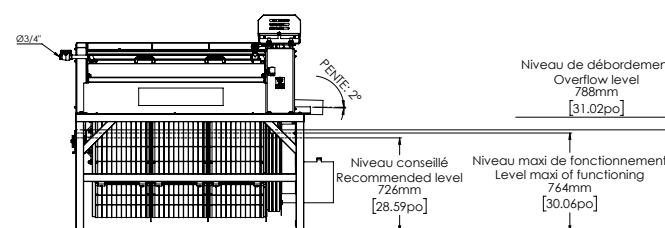
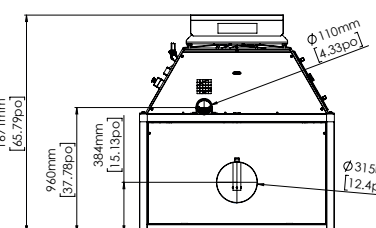
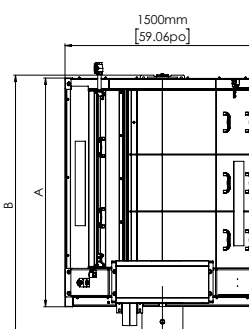
A



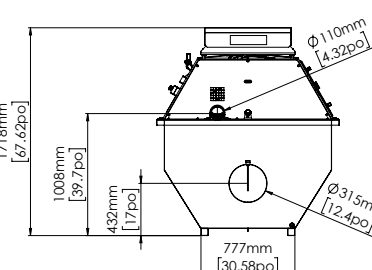
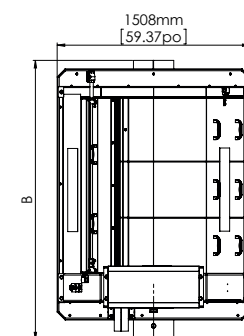
• Input by pipe



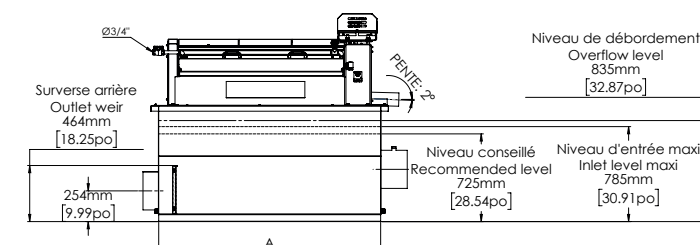
	3-120		6-120		9-120		12-120	
Net weight	372 kg 820 lbs		457 kg 1008 lbs		534 kg 1177 lbs		621 kg 1369 lbs	
Unit	cm	in	cm	in	cm	in	cm	in
Width	150	59	150	59	150	59	150	59
Height	167	64	167	64	167	64	167	64
Length (A)	87	34	131	51	175	69	219	86
Length (B)	113	44	157	62	201	79	245	96



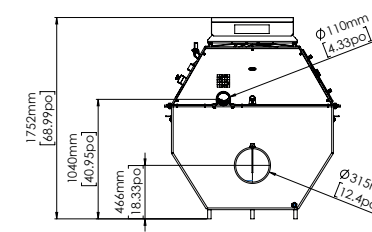
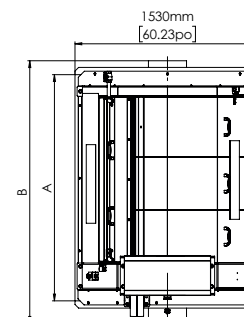
• Stainless steel tank



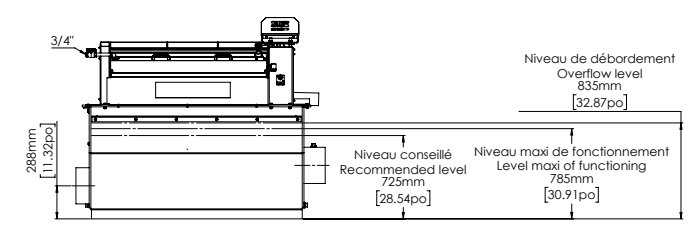
	3-120		6-120		9-120		12-120	
Net weight	395 kg 871 lbs		477 kg 1052 lbs		562 kg 1239 lbs		649 kg 1431 lbs	
Net weight full tank	1370 kg 3020 lbs		2000 kg 4409 lbs		2560 kg 5644 lbs		3250 kg 7165 lbs	
Unit	cm	in	cm	in	cm	in	cm	in
Width	150	59	150	59	150	59	150	59
Height	172	68	172	68	172	68	172	68
Length (A)	95	37	139	55	183	72	227	89
Length (B)	130	51	174	68	218	86	262	103



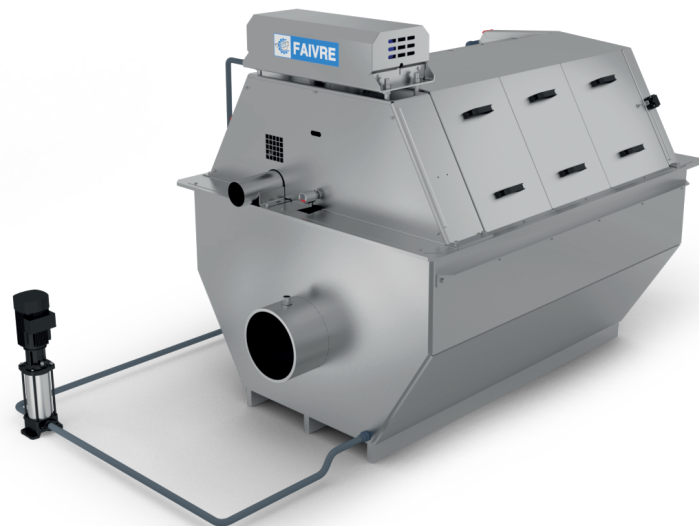
• HDPE tank



	3-120		6-120		9-120		12-120	
Net weight	-		475 kg 1047 lbs		572 kg 1261 lbs		-	
Net weight full tank	-		2000 kg 4409 lbs		2560 kg 5644 lbs		-	
Unit	cm	in	cm	in	cm	in	cm	in
Width	-	-	153	60	153	60	-	-
Height	-	-	175	69	175	69	-	-
Length (A)	-	-	139	55	183	72	-	-
Length (B)	-	-	173	68	217	85	-	-



Options



Control box with polyester box.

The control box is optional. It allows optimum control and safety for all our drum filters.

The large IP65 polyester box is more suitable for model 120, 160 or 200 filters.

For the safety of people, the box includes:

- 1 lockable disconnecter.
- 2 emergency stops including 1 on the front of the cabinet, 1 other emergency stop is positioned on the drum filter.
- 1 fast-tripping current detector is also integrated in the box. This current detector allows the filter to stop instantly in the event that the filter suddenly becomes blocked. (which can happen when a foreign body that is too large enters the filter with the water)

For the safety of the equipment, the box includes:

- 1 circuit breaker unit for the power supply to the cabinet.
- 2 Thermal circuit breakers to protect the motor of the drum filter and the motor of the rinsing pump.

The control box is delivered with:

- 5m cable for the power supply.
- 10m cable with M23 connector to easily connect the drum motor, the flushing pump, the emergency stop and the hood safety switch.
- 10m of cable with an M12 connector to easily connect the water level radar.

Ref. :

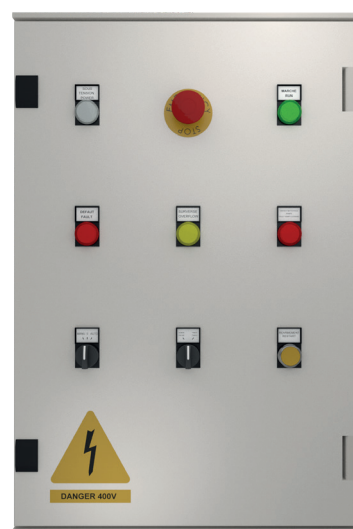
- **FTC021-B24**

Power supply 3 x 200 - 230 - 400 - 440 - 480 - 575 V 50Hz/60Hz

Rinsing pump.

Vertical pump used for cleaning filter meshes. This pump is connected to the filter unclogging ramp. Its pressure is calculated so as to be adapted to the mesh of the filter.

The pump is delivered with all the accessories for connection to the drum filter.



Level probe and (or) Timer

A level probe and a timer are 2 possible options in order to control the operation of the drum filter.

The level probe is a high-performance radar which only takes into account the level of the liquid and which is not disturbed by foam on the surface of the filtered liquid.

The timer allows the drum to be started and stopped by simple programming on the component inside the cabinet using a screwdriver.

These two options are available separately or together on the boxes, please specify this when ordering.

Ref. :

- **FTDSN4** Level radar **LR2050**

- **FTDT01** Cabinet timer **FTC001-EAS**



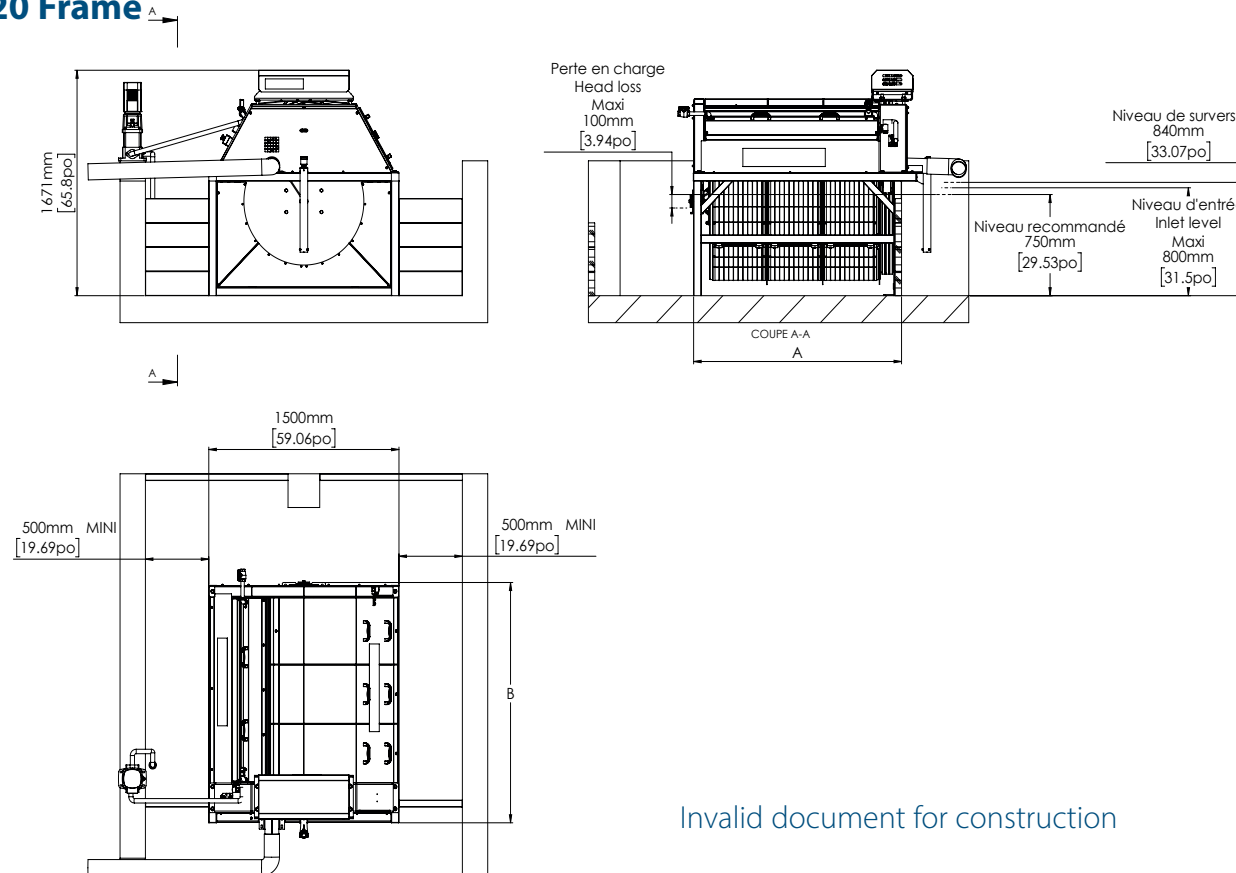
RADAR



TIMER

Installation examples

FT120 Frame



Invalid document for construction