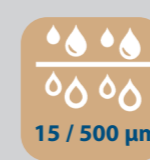


40 DrumFilter

Serie



Drum filter 40 serie

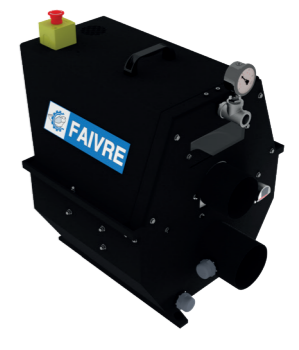
4 Models

Frame

Input by pipe

Stainless style tank

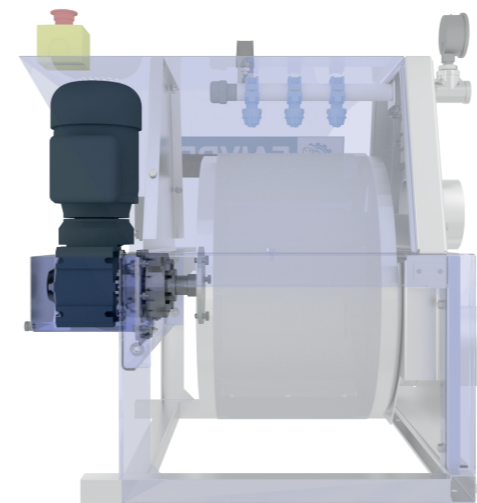
HDPE tank



Drum filter 40

Flow rate up to 12 l/s (43 m3/h) at 100 µ.

With a 40cm diameter drum, the Rotoclean 40 is the smallest filter in the Rotoclean drum filter range. Its size and light weight allow it to be installed very quickly in tight spaces. Built entirely in stainless steel. Its 40 cm diameter drum rotates at 17 rpm.

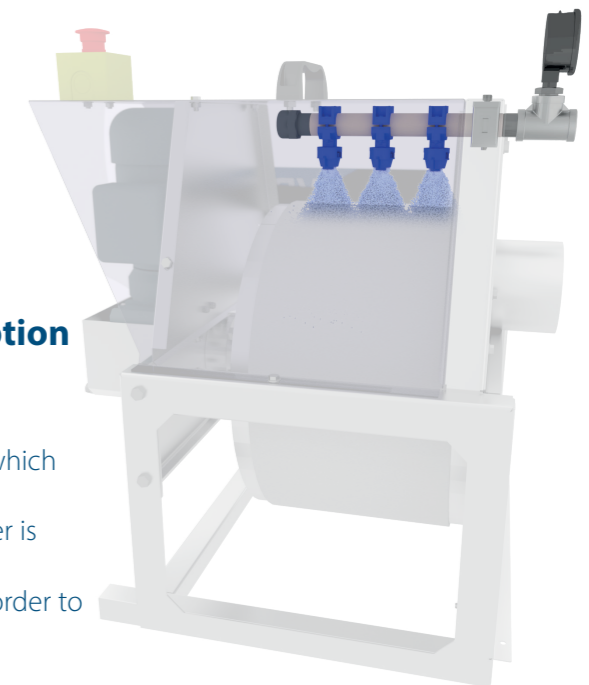


Direct Drive.

The Rotoclean 40 drum filter benefits from direct drive, because its drum is directly held in the motor reducer. This solution is simple and robust.

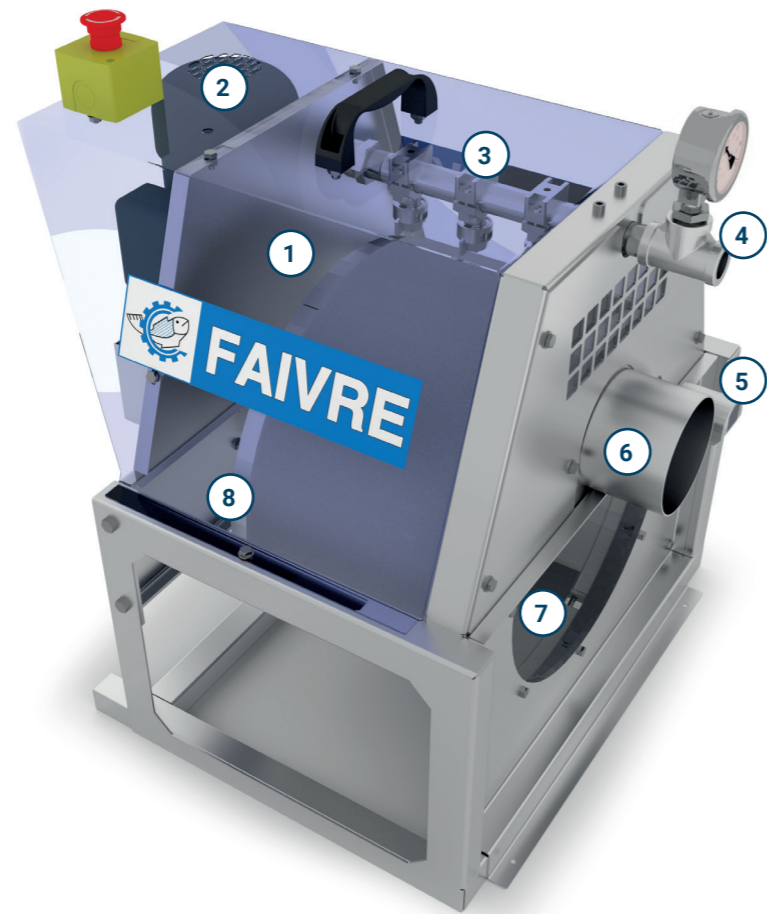
Rinsing ramp with optimized water consumption and pressure.

The Rotoclean Series 40 drum filter has only 3 rinsing nozzles, which saves rinsing water. This saving is appreciable in small closed circuits where this filter is often used. In addition, the pressure of the nozzles has been optimized in order to obtain a perfect rinsing of the fabrics without damaging them.



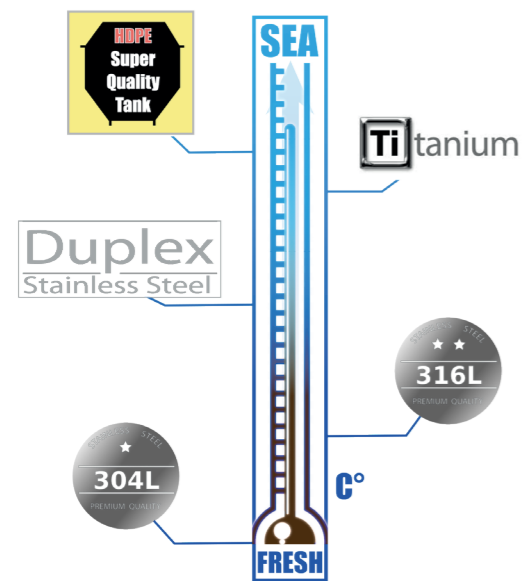
40 Rotoclean

Specifications



- 1 - Removable drum cover
- 2 - Drum drive motor reducer
- 3 - Rinsing ramp
- 4 - Rinsing manifold pressure gauge
- 5 - Level probe (option)
- 6 - Sludge outlet
- 7 - Water inlet to be filtered
- 8 - Stainless steel drum

Inlet - outlet standard	Motor power	Filter surface	Number of plates	Sludge outlet diameter	Number of Spray nozzles
Ø 125mm (6 l/s max.)	250 W	0,24 m ²	1	Ø 110 mm	3



High quality stainless steel construction.

Exclusive use of high quality stainless steel made in northern Europe (Norway, Finland, Sweden)
 - Stainless steel AISI 304L (4301) for fresh water as standard
 - Stainless steel AISI 316L (4404) for sea water as standard
 - Stainless steel DUPLEX (2205), SUPER DUPLEX (2507), HDPE and Titanium for hot sea water.

The CCPUs of the material constituting your filter order can be supplied to you on request.

• Frame

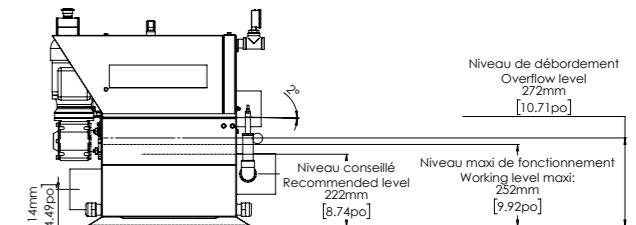
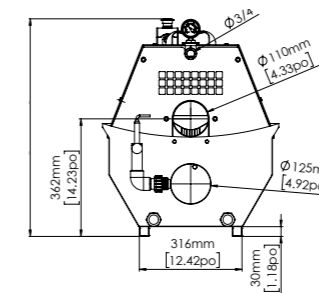
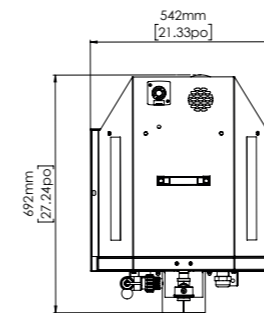
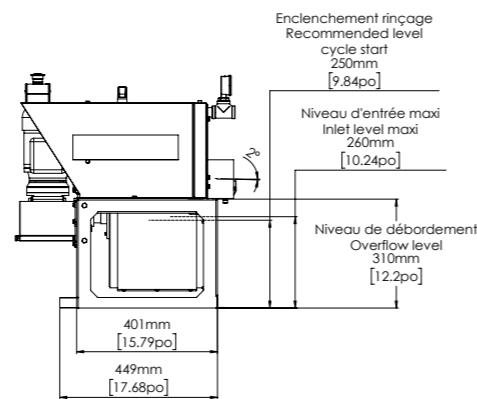
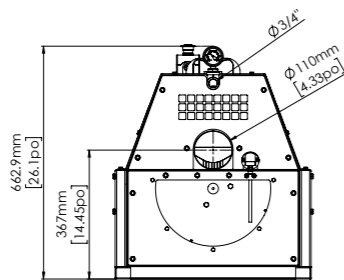
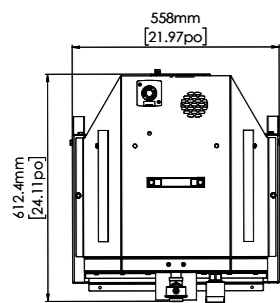


Net Weight	47 kg 104 lbs	
Unit	cm	in
Length	62	25
Width	56	21
Height	67	26

• Stainless steel tank



Net Weight	78 kg 172 lbs	
Weight full tank	110 kg 242 lbs	
Unit	cm	in
Length	70	27
Width	55	21
Height	67	26



• Input by pipe

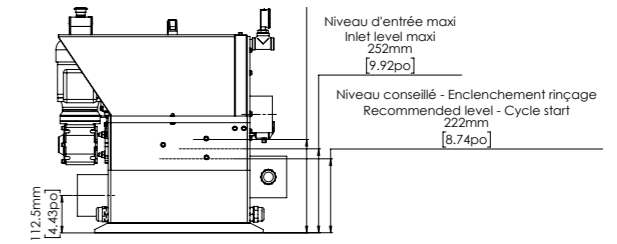
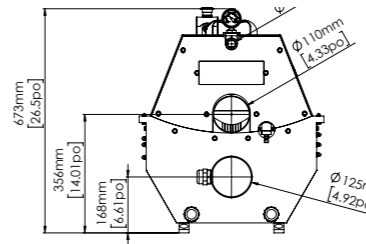
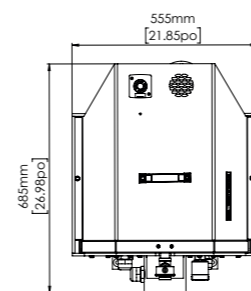
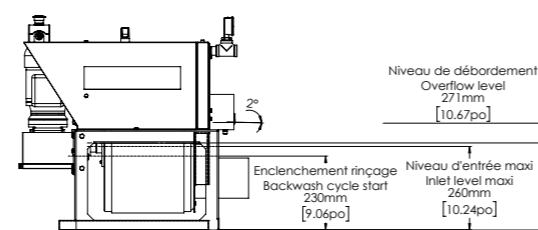
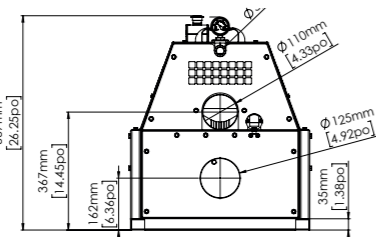
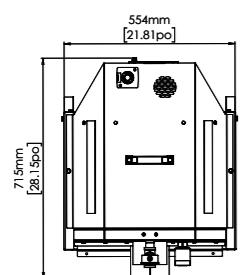


Net Weight	50 kg 110 lbs	
Unit	cm	in
Length	72	28
Width	56	22
Height	66	26

• HDPE tank



Net Weight	45 kg 99 lbs	
Weight full tank	110 kg 242 lbs	
Unit	cm	in
Length	71	28
Width	56	22
Height	69	26



Options



Rinsing pump.

Vertical pump used for cleaning filter meshes. This pump is connected to the filter unlogging ramp. Its pressure is calculated so as to be adapted to the mesh of the filter. In option the pump is delivered with all the accessories for connection to the drum filter.

Control box.

The control box is optional. It provides optimum control and safety for all our drum filters.

For the safety of people, the box includes:

- 1 lockable disconnecter.
- 2 emergency stops including 1 on the front of the cabinet, 1 other emergency stop is positioned on the drum filter.
- 1 fast-tripping current detector is also integrated in the box. This current detector allows the filter to stop instantly in the event that the filter suddenly becomes blocked. (which can happen when an oversized foreign body enters the filter with the water)

For the safety of the equipment, the box includes:

- 1 circuit breaker unit for the power supply to the cabinet.
- 2 Thermal circuit breakers to protect the motor of the drum filter and the motor of the rinsing pump.

The control box is delivered with:

- 5 m cable for the power supply.
- 10 m cable with M23 connector to easily connect the drum motor, the flushing pump, the emergency stop and the hood safety switch.
- 10 m of cable with an M12 connector to easily connect the water level radar.

Ref. : - **FTC001-EAS**

Power supply 3 x 200 - 230 - 400 - 440 - 480 - 575 V 50Hz/60Hz



Level probe and (or) Timer

A level probe and a timer are 2 possible options in order to control the operation of the drum filter.

The level probe is a high-performance radar which only takes into account the level of the liquid and which is not disturbed by foam on the surface of the filtered liquid. The timer allows the drum to be started and stopped by simple programming on the component inside the cabinet using a screwdriver.

These two options are available separately or together on the boxes, please specify this when ordering.

Ref. :

- **FTDSN4** Level radar **LR2050**
- **FTDT01** Cabinet timer **FTC001-EAS**



RADAR



TIMER

