

60

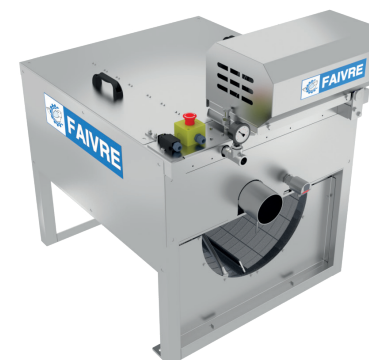
DrumFilter

Serie



Drum filter 60
serie

4 Models



Frame



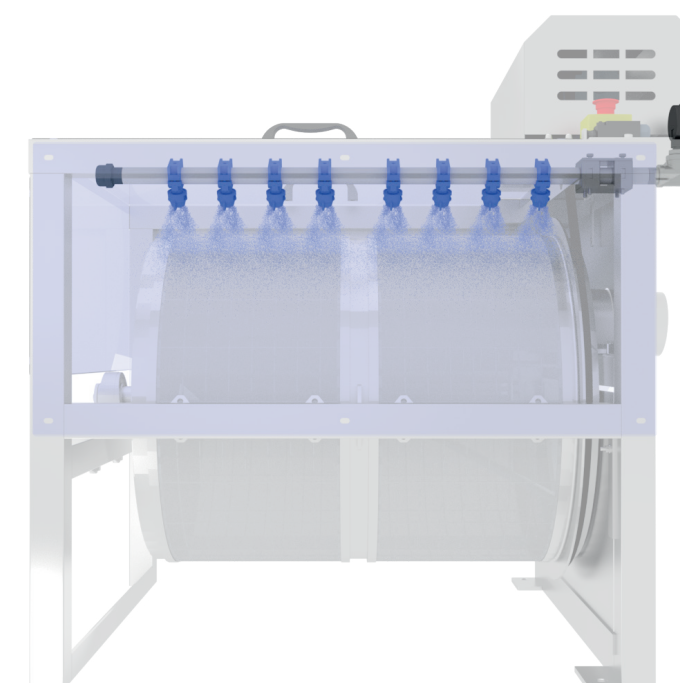
Input by pipe

Drum filter 60

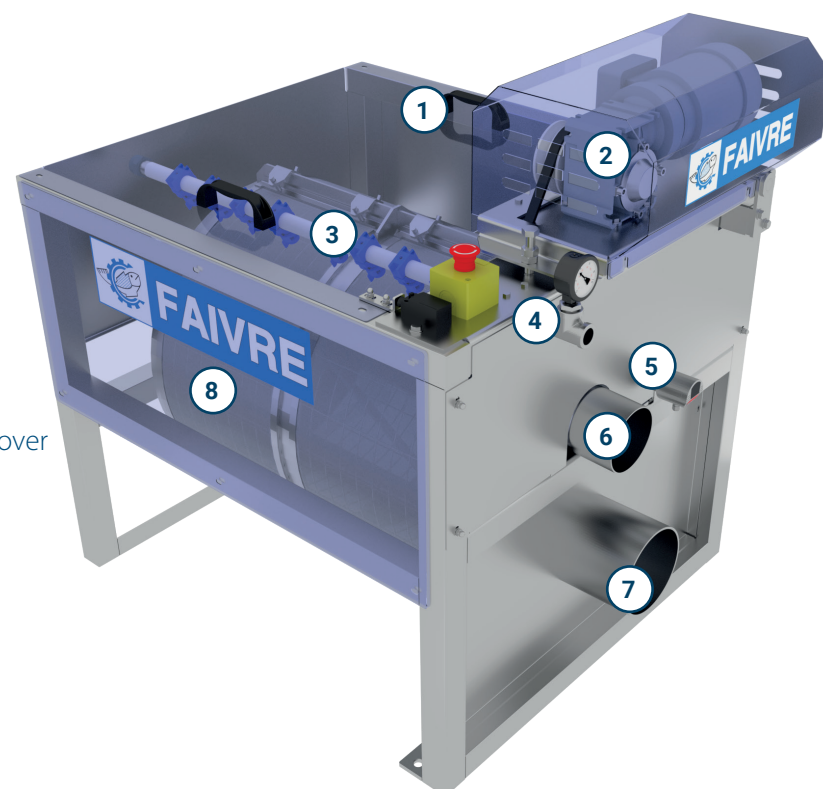
Flow rate up to 16 l/s (58 m3/h) at 100 µ.
Its size and light weight allow it to be installed very quickly in tight spaces.
It is ideal for small closed circuits, laboratories, test stations etc ...
Built entirely in stainless materials or technical plastic, it is insensitive to corrosion.
Its 60 cm diameter drum rotates at 8 revolutions per minutes.

Rinsing ramp with optimized water consumption and pressure.

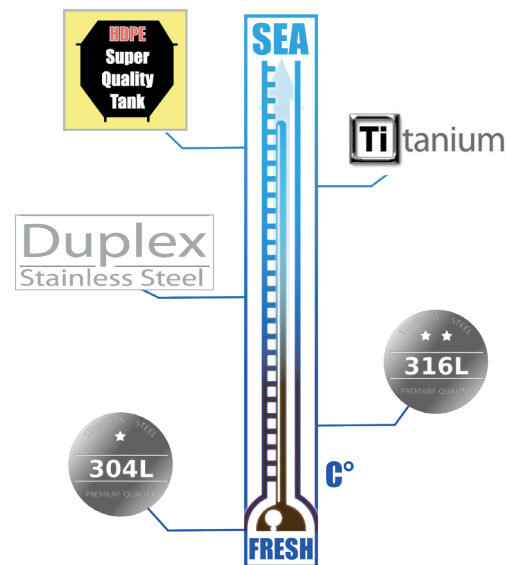
The Rotoclean Series 60 drum filter has only 4 nozzles or 8 rinsing nozzles, this saves the rinsing water.
This saving is appreciable in small closed circuits where this filter is often used.
In addition, the pressure of the nozzles has been optimized in order to obtain a perfect rinsing of the fabrics without damaging them.



Specifications



- 1 - Removable drum cover
- 2 - Drum drive motor under stainless steel cover
- 3 - Rinsing ramp
- 4 - Rinsing manifold pressure gauge
- 5 - Level probe (option)
- 6 - Sludge outlet
- 7 - Water inlet to be filtered
- 8 - Stainless steel drum



High quality stainless steel construction.

Exclusive use of high quality stainless steel made in northern Europe (Norway, Finland, Sweden)

- Stainless steel AISI 304L (4301) for fresh water as standard
- Stainless steel AISI 316L (4404) for sea water as standard
- Stainless steel DUPLEX (2205), SUPER DUPLEX (2507), HDPE and Titanium for hot sea water.

The CCPUs of the material constituting your filter order can be supplied to you on request.

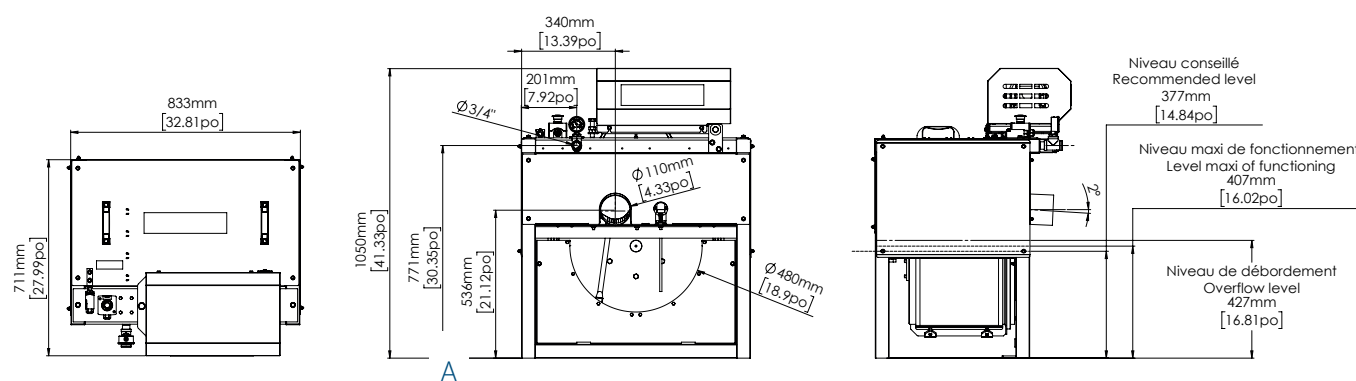
Model	Inlet-outlet standard	Motor power	Filter surface	Number of plates	Sludge outlet diameter	Number of Spray nozzles
2 - 60	Ø125mm (6l/s max.)	250 W	0,5 m ²	2	Ø 110 mm	4
4 - 60	Ø160mm (16l/s max.)		1 m ²	4		8



Frame



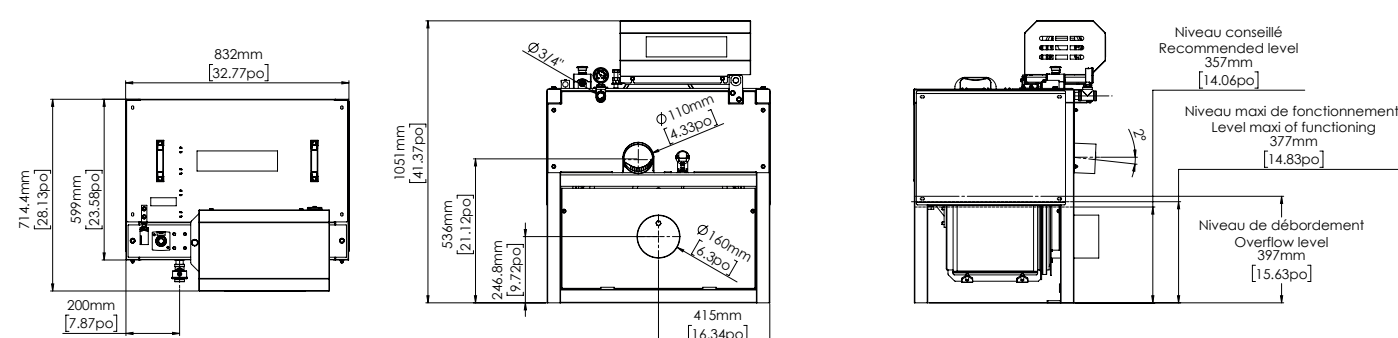
	2 - 60		4 - 60	
Net Weight	115 kg 253 lbs		140 kg 308 lbs	
Unit	cm	in	cm	in
Width	84	33	84	33
Height	106	41	106	41
Length (A)	56	22	90	35
Length (B)	71	28	105	41



Input by pipe



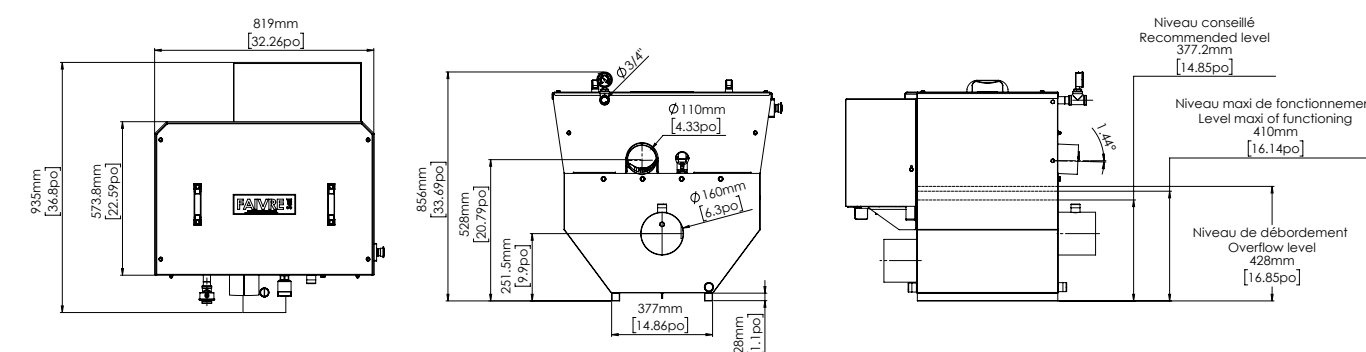
	2 - 60		4 - 60	
Net Weight	121 kg 267 lbs		145 kg 319 lbs	
Unit	cm	in	cm	in
Width	83	33	83	33
Height	105	41	105	41
Length (A)	60	23	95	37
Length (B)	72	28	107	42



Stainless steel tank



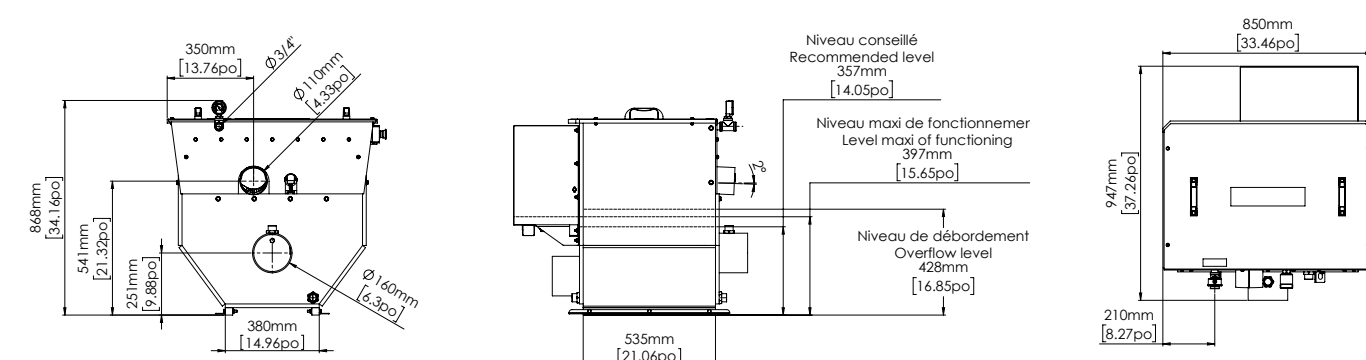
	2 - 60		4 - 60	
Net Weight	126 kg 278 lbs		155 kg 341 lbs	
Net weight full tank	390 kg 860 lbs		600 kg 1322 lbs	
Unit	cm	in	cm	in
Width	83	32	83	32
Height	104	41	104	41
Length (A)	62	24	97	38
Length (B)	89	35	123	48



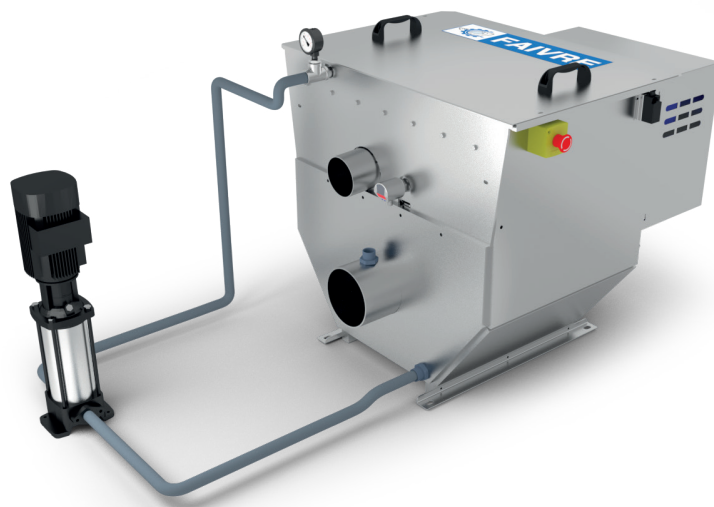
HDPE tank



	2 - 60		4 - 60	
Net Weight	140 kg 309 lbs		160 kg 352 lbs	
Net weight full tank	390 kg 860 lbs		600 kg 1322 lbs	
Unit	cm	in	cm	in
Width	85	33	85	33
Height	87	34	87	34
Length (A)	54	21	89	35
Length (B)	95	37	130	51



Options



Rinsing pump.

Vertical pump used for cleaning filter meshes. This pump is connected to the filter unclogging ramp. Its pressure is calculated so as to be adapted to the mesh of the filter.
The pump is delivered with all the accessories for connection to the drum filter.

Control box.

The control box is optional. It provides optimum control and safety for all our drum filters.

For the safety of people, the box includes:

- 1 lockable disconnecter.
- 2 emergency stops including 1 on the front of the cabinet, 1 other emergency stop is positioned on the drum filter.
- 1 fast-tripping current detector is also integrated in the box. This current detector allows the filter to stop instantly in the event that the filter suddenly becomes blocked. (which can happen when an oversized foreign body enters the filter with the water)

For the safety of the equipment, the box includes:

- 1 circuit breaker unit for the power supply to the cabinet.
- 2 Thermal circuit breakers to protect the motor of the drum filter and the motor of the rinsing pump.

The control box is delivered with:

- 5m cable for the power supply.
- 10m cable with M23 connector to easily connect the drum motor, the flushing pump, the emergency stop and the hood safety switch.
- 10m of cable with an M12 connector to easily connect the water level radar.

Ref. : - **FTC001-EAS**

Power supply 3 x 200 - 230 - 400 - 440 - 480 - 575 V 50Hz / 60Hz



Level probe and (or) Timer

A level probe and a timer are 2 possible options in order to control the operation of the drum filter.

The level probe is a high-performance radar which only takes into account the level of the liquid and which is not disturbed by foam on the surface of the filtered liquid.

The timer allows the drum to be started and stopped by simple programming on the component inside the cabinet using a screwdriver.

These two options are available separately or together on the boxes, please specify this when ordering.

Ref. :

- **FTDSN4** Level radar **LR2050**
- **FTDT01** Cabinet timer **FTC001-EAS**



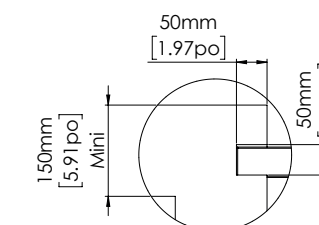
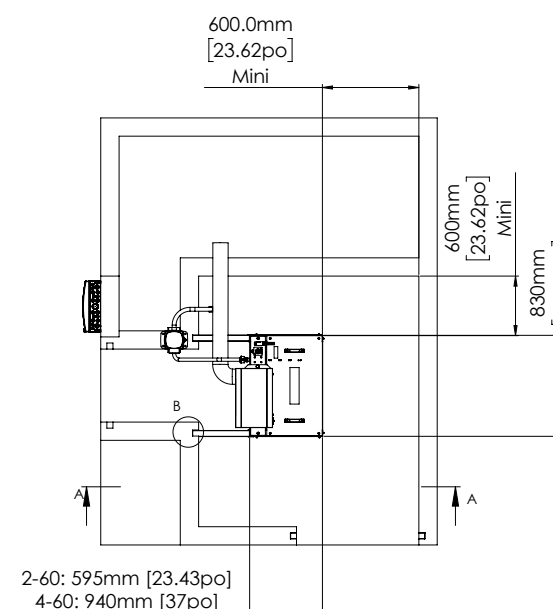
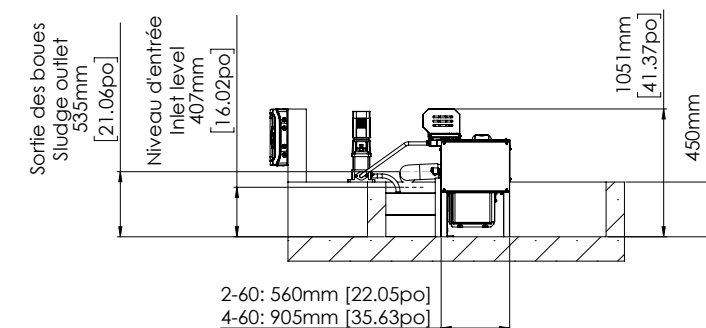
RADAR



TIMER

Installation examples

FT60 Frame



Invalid document for construction