

HELIOS

Live fish grader

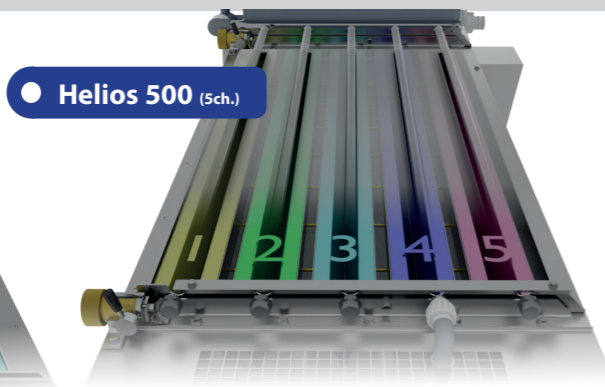
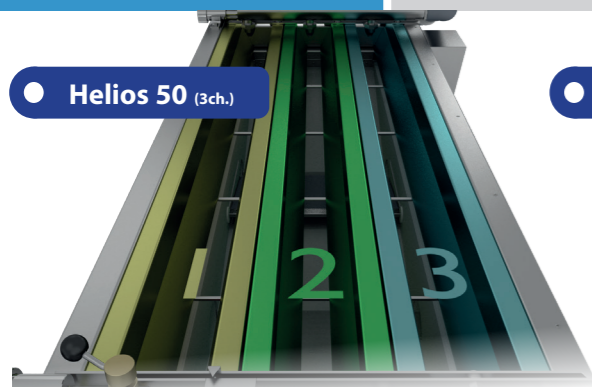


• Helios 50



• Helios 500

Helios fish grader 50 - 500



HELIOS 50 - 500 grader

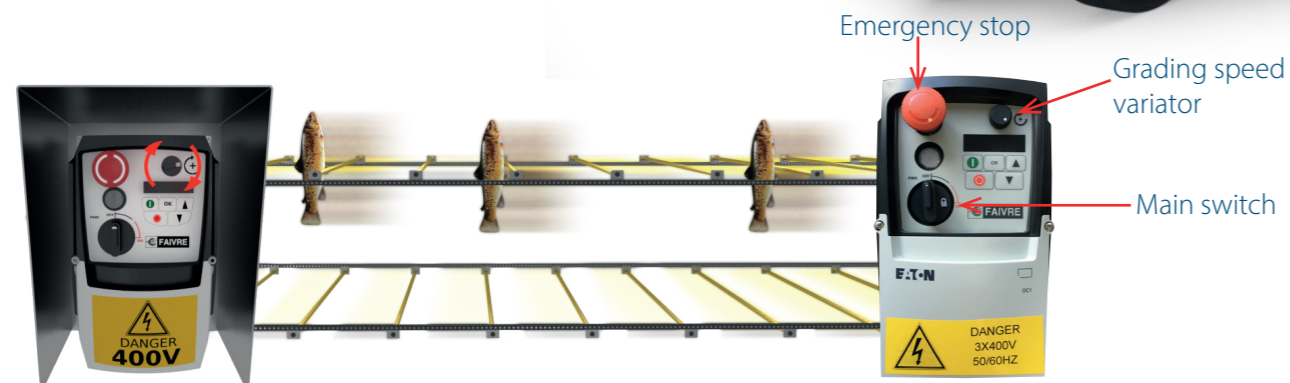
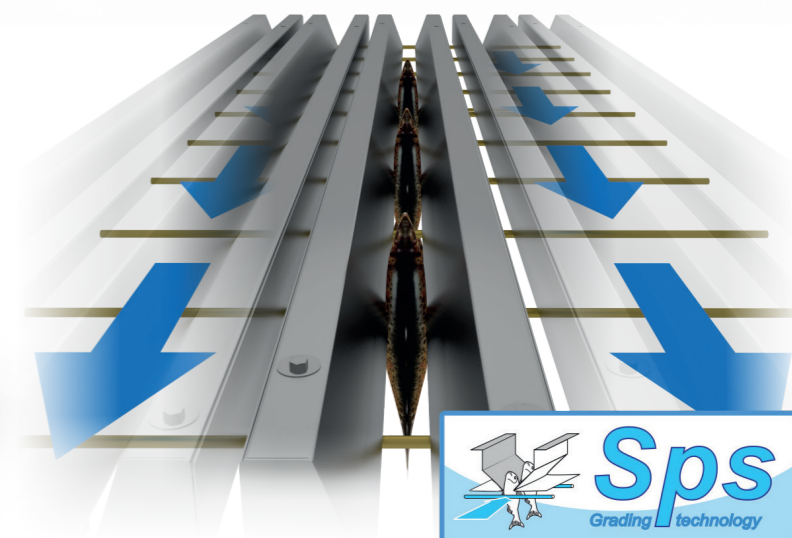
50 g - 2,5 kg
3 or 5 channels
3 sizes

General characteristics :

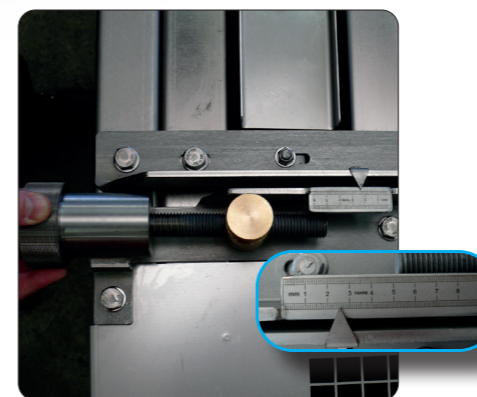
- 3 grading channels Helios 50
- 5 grading channels Helios 500
- 3 receipt hoppers with outlet on each side of the machine.
- Electronic adjustable grading speed
- Lifting jack.
- Made of aluminium AISI 316L Stainless steel.

Main advantages :

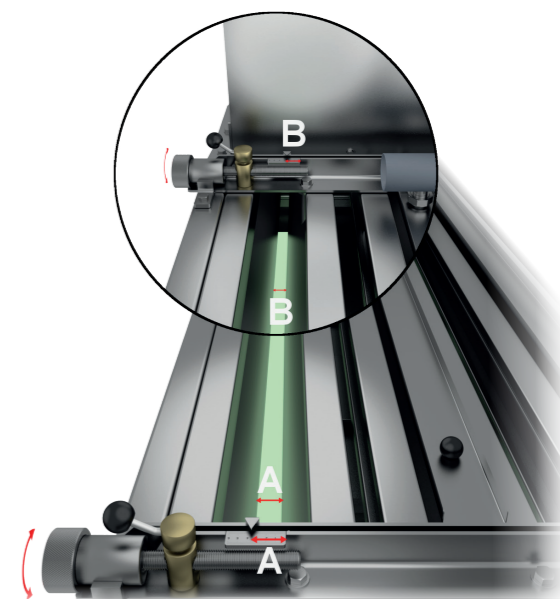
- ✓ A grader fitted with the performing Sps Technology made for a high speed
- ✓ grading and without injury.
- ✓ A machine entirely made of aluminium and Stainless steel.
- ✓ An easy and perfect adjustment thanks to its lifting jack.
- ✓ An elaborate watering system fitted with adjustment gates.



Fish grader IP 67 electric panel.



Accurate adjustment vernier.



Specifications

Grader model	HELIOS 50	HELIOS 500
Nbr of channels	3	5
Nbr of sizes	3	3
Length of grading channels (mm)	2400	2400
Max. channels opening (mm)	75	75
Nbr of outlets Ø (mm)	6 x Ø 250	6 x Ø 250
Weight min. - max. Trout/Salmon	50 g - 2,5 kg	50 g - 2,5 kg
Weight min. - max. Bass/Bream/Tilapia/Carp	50 g - 1kg	50 g - 1kg
Hourly rate (tonnes/hour)	3 - 6	5 - 9
Grader weight	690 kg - 1521 lbs	1045 kg - 2303 lbs
Height (m)	1,5	1,5
Motor power	0,55 kW	0,55 kW
Advice pump flow (m³/h)	50	60
Reference (Sea water 316L)	TH5036	TH5056

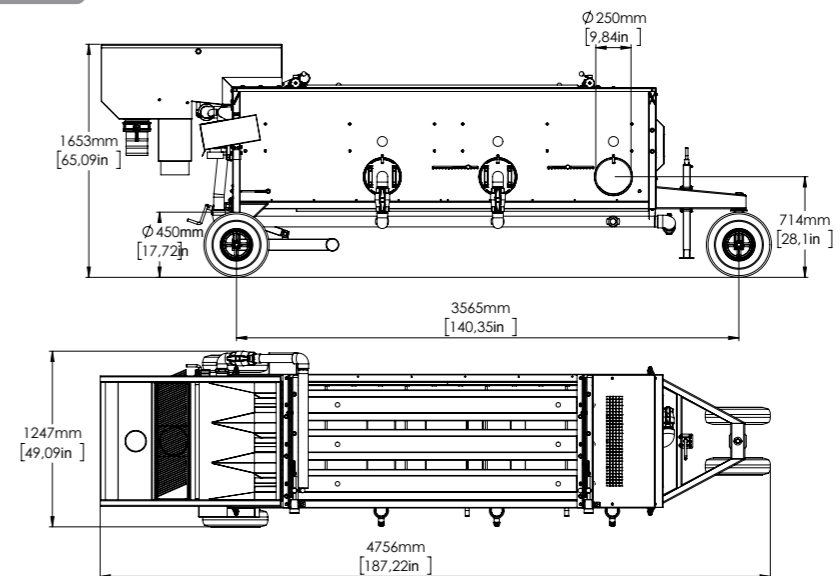
The grader motors are available in 4 supply voltages (add the desired voltage reference to the grader reference for your requests):

- Three phases 342 - 528 V 50/60 Hz Ref. : **400T**
- Three phases 180 - 264 V 50/60 Hz Ref. : **230T**
- Single phase 180 - 264 V 50/60 Hz Ref. : **230M**
- Single phase 110 V 50/60 Hz Ref. : **110M**

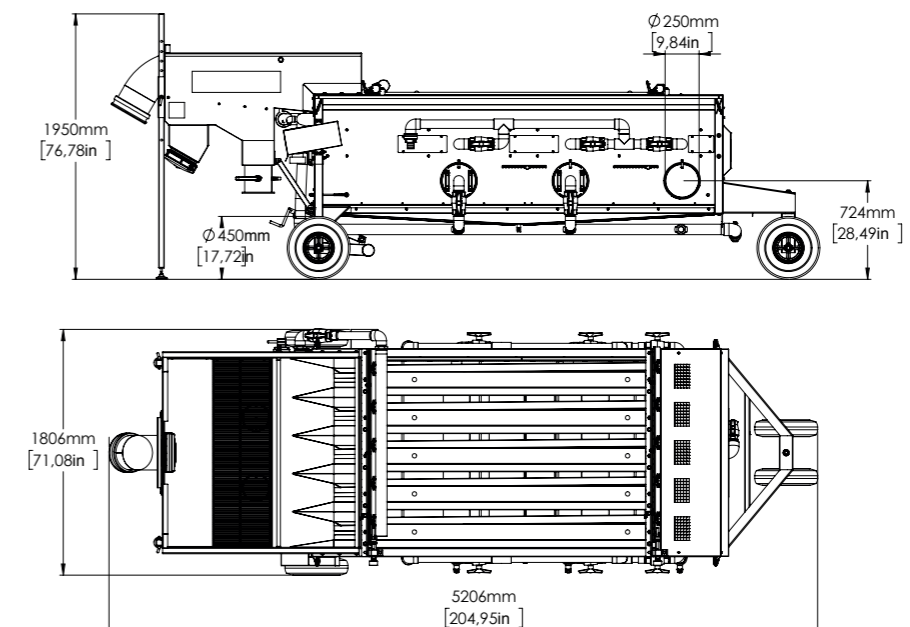
Description

- ① IP 55 geared motor and drive belt
- ② Fish inlet hopper
- ③ Water supply to channels, adjustable with a valve
- ④ Grading plane
- ⑤ Water ramp into each channel for watering fish
- ⑥ Chanel adjustment vernier (x2)
- ⑦ Receiving hoppers
- ⑧ Fish outlets
- ⑨ AISI 316L Stainless steel frame
- ⑩ Front lifting jack
- ⑪ Fish conveying fingers
- ⑫ Drive chain
- ⑬ Towbar
- ⑭ Rear lifting device
- ⑮ Inflatable tire Ø 400 mm (16 in)

Helios 50



Helios 500



OPTIONS

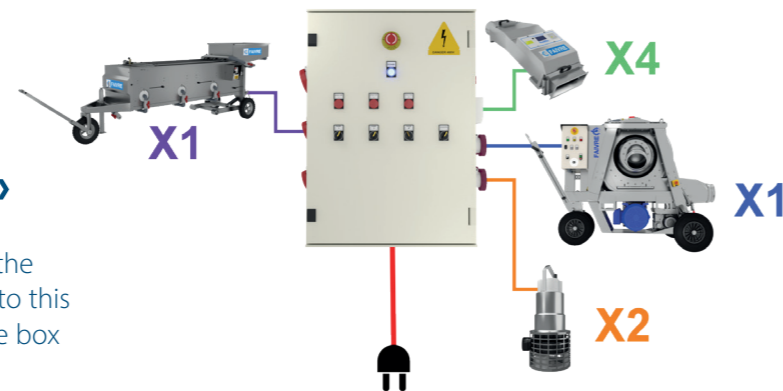
Control box «Packcontrol»

This option considerably reduces the cables left on the ground. Each equipment can be directly connected to this electrical cabinet, which is attached to the sorter. The box allows you to connect and control:

- 1 grader
- 2 water pumps
- 1 fish pump
- 4 counters.

The front panel switches allow each device to be turned on or turned off separately. Thermal circuit breakers ensure the protection of each piece of equipment. A differential switch protects the operators.

- Ref. :
- 3 x 342 - 525 V 50/60 Hz inlet voltage Ref. : **THC0024**
 - 3 x 164 - 264 V 50/60 Hz inlet voltage Ref. : **THC0022**
 - 1 x 230 V 50/60 Hz inlet voltage Ref. : **THC004***
- * water pump max. 2,2 kW with single phase



Universal dewatering hopper

This universal dewatering hopper allows you to connect a Pescavac pump or an elevator or a Pescamotion pump.

- For Helios 50 grader :
- Ø fish pump pipe 8" (hopper included in the grader price) Ref. : **TH503DEWU**

- For Helios 500 grader :
- Ø fish pump pipe 8"
- Ref. : **TH505DEWU**



Water pump for grader

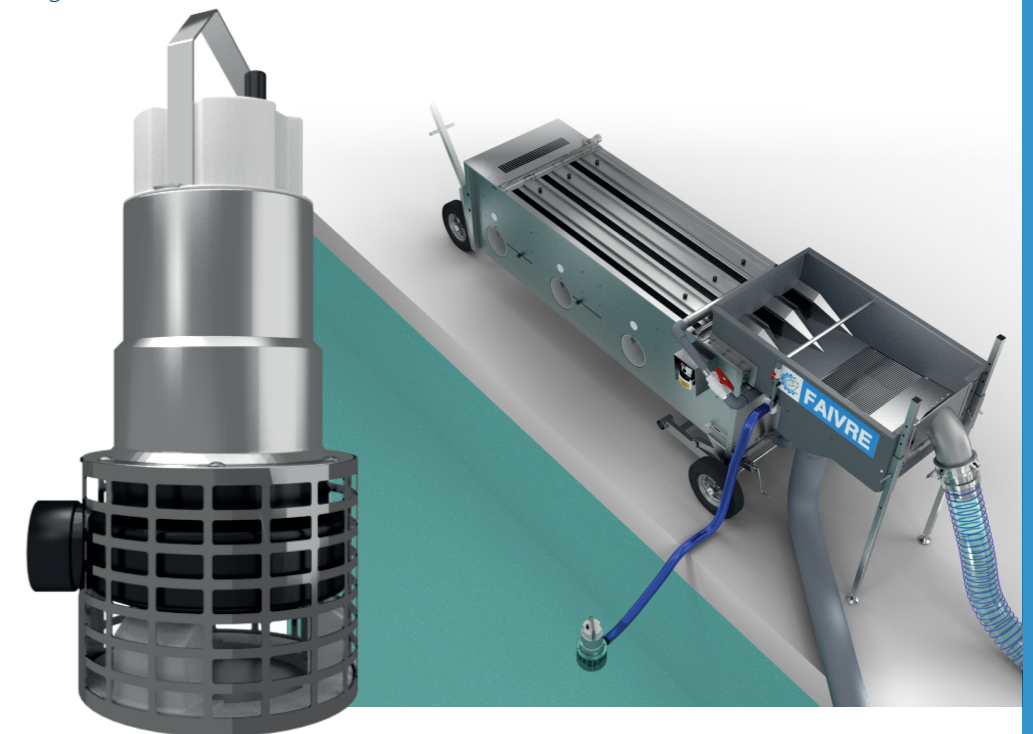
A suitable water pump must be connected to the grader in order to grade the fish without damage. We can offer you a Stainless steel submersible pump adapted to your machine. This pump has a Stainless steel strainer to suck the fish, it is delivered with 2.5m flexible hose and fittings, adapted to the grader.

- For Helios 50 grader
- Pump flow 40m³/h supply voltage 1 x 230 V 50 Hz Ref. : **TPOW40I6M5**
 - Pump flow 40m³/h supply voltage 3 x 400 V 50 Hz Ref. : **TPOW40I6T5**

- For Helios 500 grader
- Pump flow 50 m³/h supply voltage 3 x 400 V 50 Hz Ref. : **TPOW50I6T5**

- Accessories
- 5 m flexible hose Ø 60 mm (2,5 ") and storz fitting plus 90 ° Stainless steel elbow to connect the pump to the grader Ref. : **TPOHLINK60**

60 Hz pump on request



Adapters :

The inlet of the dewatering hopper of the graders is an 8" (200 mm) male cam lock. If you want to connect a 6" or 10" hose to this hopper, you need an adapter.

- To connect a 6" (150 mm) pipe to the dewatering hopper Helios 50 - 500
- 8" female to 6" male aluminum reduction Ref. : **PH061111**

- To connect a 10" (250 mm) pipe to the dewatering hopper Helios 50 - 500
- 10" female to 8" male aluminum reduction Ref. : **P1100101**

