

PESCAMOTION

Propeller fish pump

Fish Pump

10"

Series
50 8-10"



A new 10" (250 mm) fish pump, with high performance.

Pescamotion 50

Ideal for supplying a high capacity grader, for transferring Fish to a tank or loading lorries.

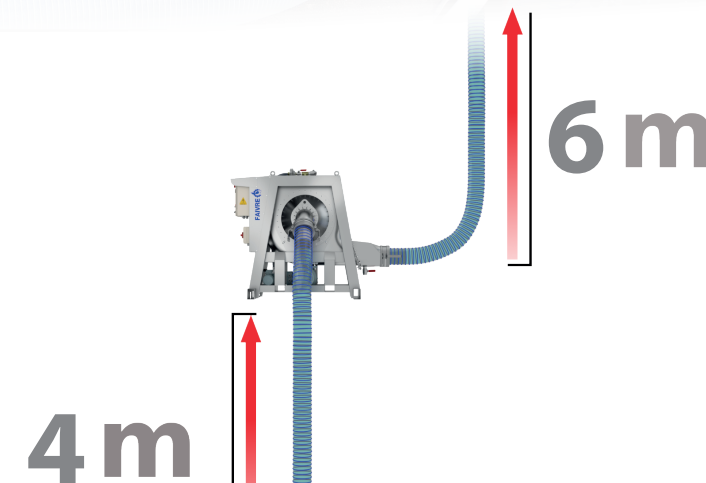
The Pescamotion 50 pump can easily be adapted to every situation.

- Premium performance :**
- Up to 3000 g (Trout Salmon)
 - Up to 1500 g (Sea Bass and Sea Bream)
 - Up to 12 m total dynamic head.

Key benefits :

- ✓ High capacity, up to 50 tons/hour
- ✓ For fish up to 3 kg on average weights (Salmonids)
- ✓ Total dynamic head : 12 m
- ✓ Weight : 950 kg - 2095 lbs
- ✓ Remote control as option (200 m - 650 ft)
- ✓ "Auto stop" priming system
- ✓ Free maintenance with "Belt drive system" pump
- ✓ Pump housing in Stainless steel 316L (ready to use in sea water)

Warning : The pump performance may vary according to the height and weight of the fish.



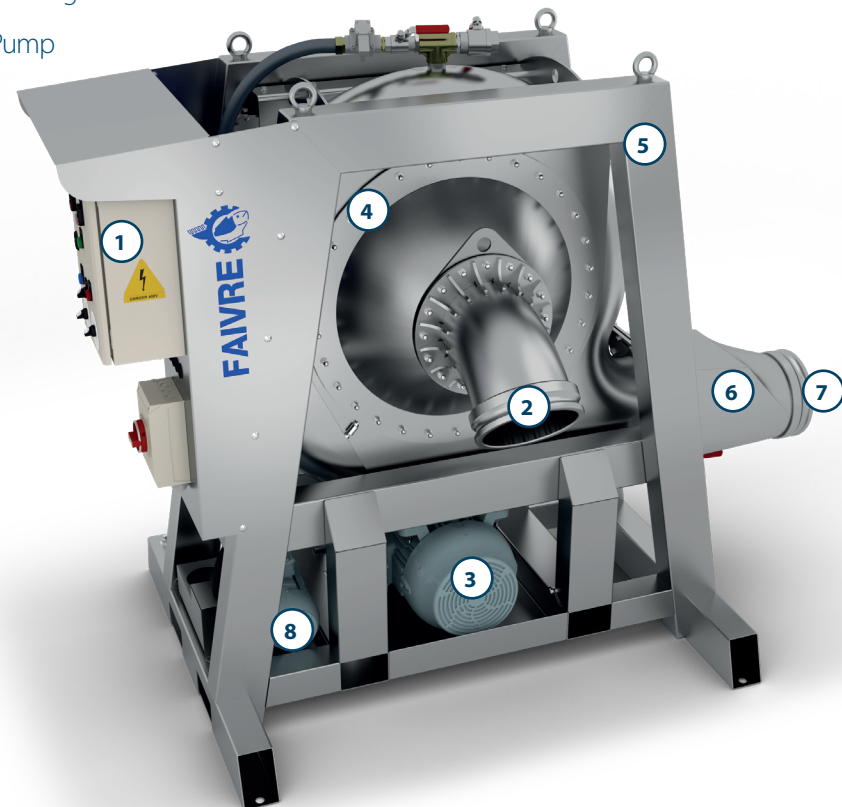
XXL

Optimized by powerful digital simulation tools, the performance of the Pescamotion 50 matches its exceptional design. Its 12 m total dynamic head allows its easy adaptation to every situation.

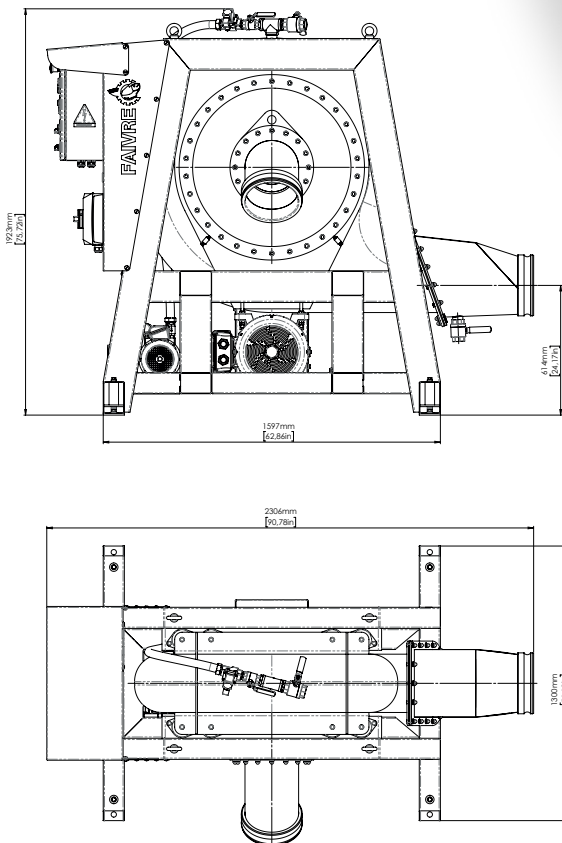
Electrical box central fitted with a frequency converter to control the pump speed.



- ① Electrical box
- ② AISI 316L Stainless steel Adjustable suction elbow (10 in - 250 mm male camlock) intake pipe
- ③ Main pump motor
- ④ AISI 316L Stainless steel pump housing
- ⑤ AISI 316L Stainless steel frame
- ⑥ AISI 316L stainless steel pump outlet valve
- ⑦ Ø 250 mm (10 in - 250 mm male camlock) discharge connection
- ⑧ AISI 316L stainless steel priming liquid Ring Pump



Specifications



Model	PESCAMOTION 50
Main drive motor	18,5 kW
Main drive motor control	Frequency variator
Prime drive motor	1,5 kW
Inlet Ø	(250 mm) 10 in male cam lock
Outlet Ø	(250 mm) 10 in male cam lock
Total dynamic head	12 m - 39 ft
Fish weight max (average)	3000 g Trout/Salmon
Pump speed max.	390 rpm
Water flow max. (390 rpm, 1m vertical head discharge)	600 m³/h
Weight	950 kg - 2095 lbs
Reference 3 x 380 - 480 V 50/60 Hz	PH1003
Reference 3 x 200 - 240 V 50/60 Hz	PH1004

Description

OPTIONS

Remote control

200 meters IP67 remote control, supplied as an option.

Allows a full control of the pump (stop / start, pump priming, pump motor, and speed control)

Belt clip and docking station included

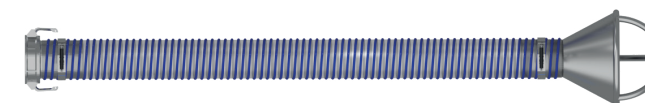
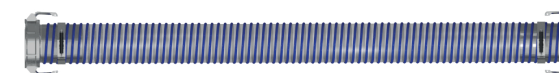
Ref. : **PH00REM2**



200 M



Kit starter Pack 10"



5 M

(5m Inlet / 5m Outlet) cam-lock MF and Suction cone
- kits of 2x5 meters of 8" flexible pipes

Ref. : **PP1001P**

Semi - transparent, flexible hoses

Ø 10" (Ø 250 mm) hoses with male and female cam lock mounted at each end of the hose

Ref. : **PP1003FM** long. 5 m



Ø 8" (Ø 200 mm) hoses with male and female cam lock mounted at each end of the hose

Ref. : **PP0803FM** long. 5 m

Ref. : **PP0804FM** long. 10 m



Option parts for fish pump

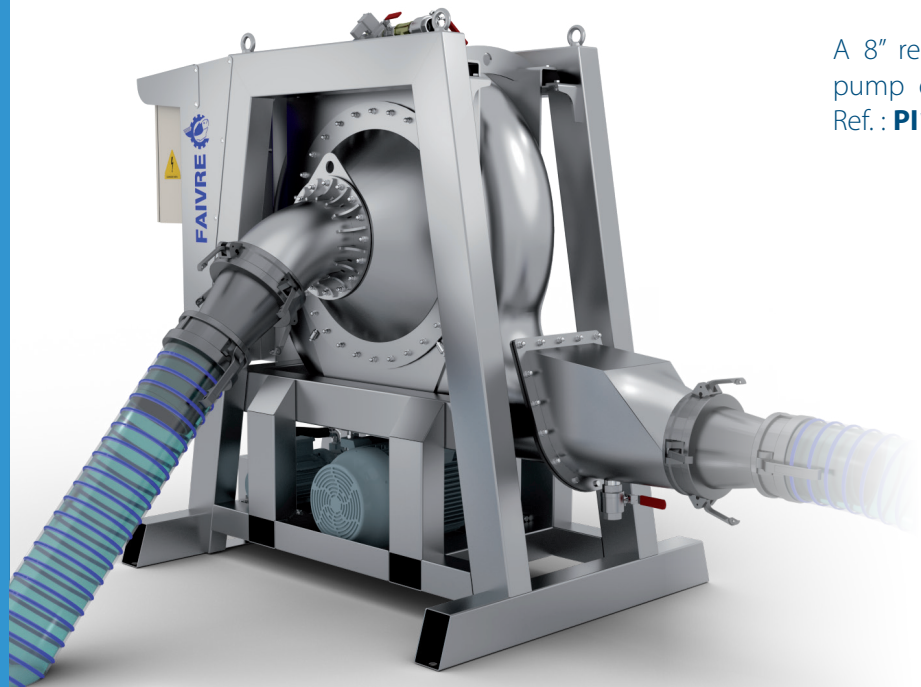


OPTION PARTS FOR FISH PUMP 8"

- Cam lock male (Aluminum) Ref. : **CLEA250**
- Cam lock female (Aluminum) Ref. : **CLCA250**
- 10" Suction cone Ref. : **PV100803**

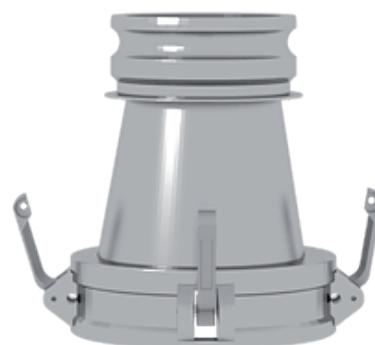
OPTIONS

Adapter cam lock 10" to 8"



A 8" reduction on the inlet and outlet of the pump enables its adaptation to every situation.
Ref. : **PI100801**

8" (203 mm) male



10" (250 mm) female

Dewatering hopper Dewat 50 (10")

The water separator hopper is an important part of the proper functioning of a fish pump. To be effective, the water separating hopper must have a particularly studied design. For this, we called on digital simulation.
Ref. : **TD1001H**

