

Pescasight

Camera fish counter



Fish Counter

2,5"

10 Series

Counting Fish weight 0,2 g to 20 g.

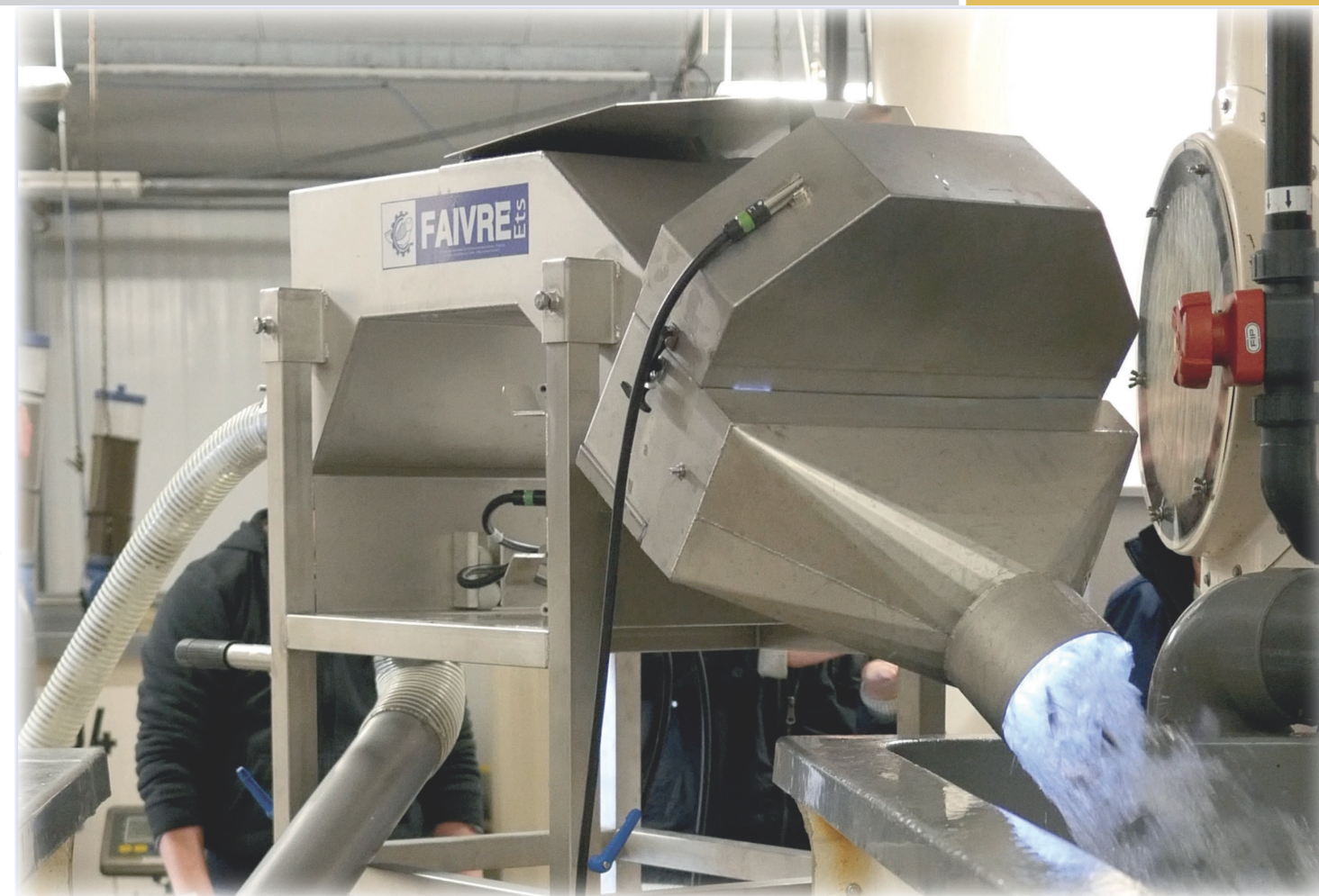
Designed to be placed at the outlet of a fish pump, for loading trucks or fish transfer.

This fish counter has the latest technology and its ease of use is unparalleled. Its installation on site is quickly made.. Expected to cover the counting needs from 0,2 g to 20 g with fish and 1g to 6g with shrimps. Maximum hourly flow of 650 000 fish per hour with 0,5 g fish.

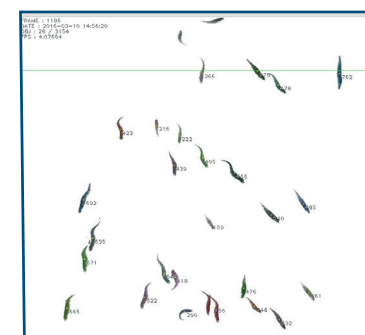
Our technology allows for average weight fish during the counting.

At the end of the counting operation, it is possible to connect a USB key to save the counting report and the video for verification purposes.

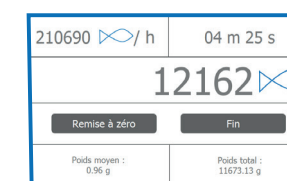
Designed to be placed at the outlet of a fish pump for loading trucks or fish transfer.



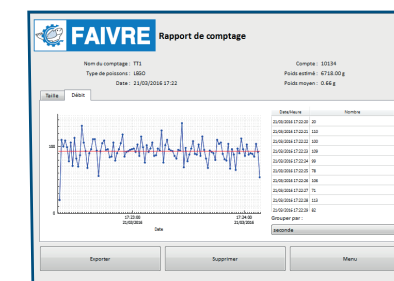
Pescasight 100 working in Sea Bream hatchery



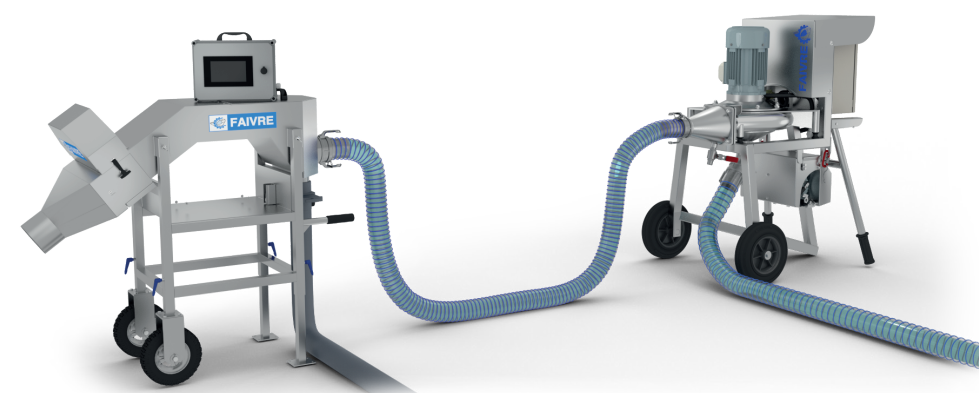
Video for verification



A large touch screen allows the operators to check the counter and to display information.



Counting report

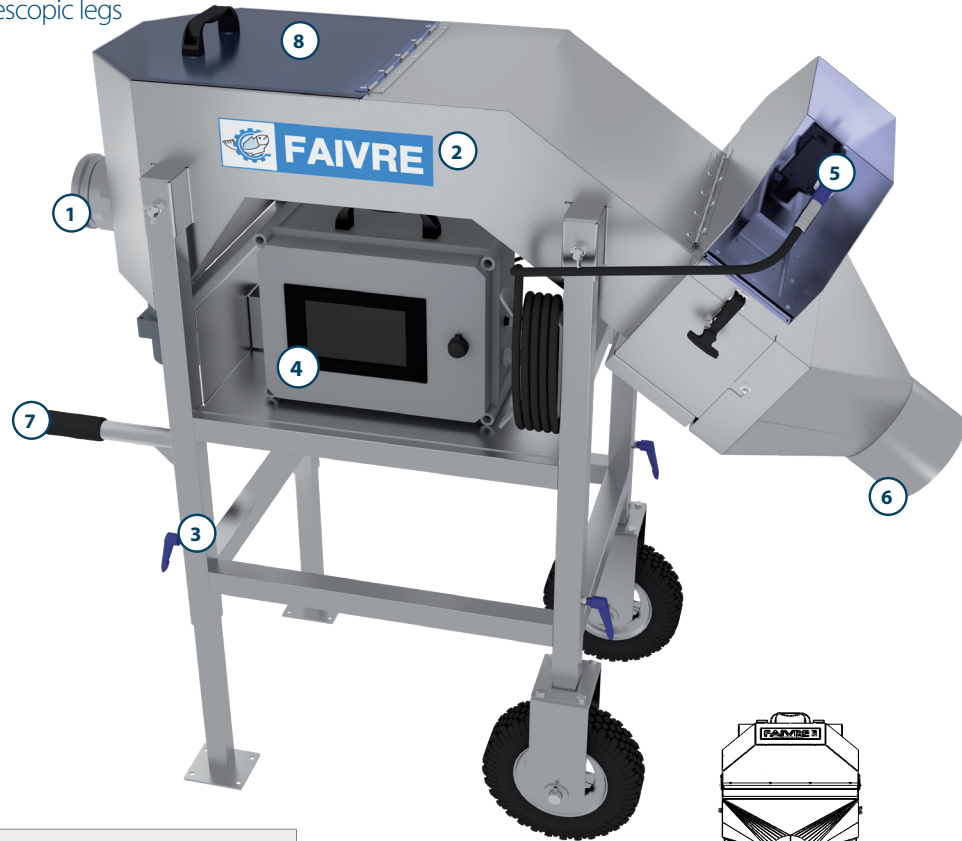


Average fish weight as standard

Pescasight 100 fish counter

Description

- ① Fish counter inlet female Ø 63 mm - 2,5 in male camlock
- ② Fish counter body in marine grade AISI316L stainless steel
- ③ AISI 316L stainless steel frame with 4 telescopic legs
- ④ 12" Touch screen control unit
- ⑤ Counting unit with camera
- ⑥ AISI 316L Ø 150 mm fish outlet
- ⑦ Carry handles
- ⑧ Chancel Acces cover



Specifications

Fish counter model	Pescasight 100	
Species	Trout Salmon	Bass/Bream/Tilapia/Carps/Perch
Size	0,2 g to 20 g	0,2 g to 20 g
Hourly flow (maxi) with 0,5 g fish	650 000 fish/h	650 000 fish/h
Hourly flow (maxi) with 1 g fish	350 000 fish/h	350 000 fish/h
Channel quantity	1	
Counting channel width	400 mm	
Inlet connection	2,5" male cam lock (60 mm)	
Outlet connection	125 mm	
Accuracy	98% - 100%	
Average fish weight	Included	
Video verification	Included	
Weight	Approx. 75 kg	
Voltage 50/60 Hz	100 - 240 V single phase	
References	PESIG100	

