

PESCAVISION

Led fish counter

Pescavision 50

Fish counters for counting Fish weight 300 g to 3,5kg

They offer an unparalleled ease of use.. They can be installed very quickly.
The Pescavision 50 model cover counting needs extending from 300 g to 3,5 kg.

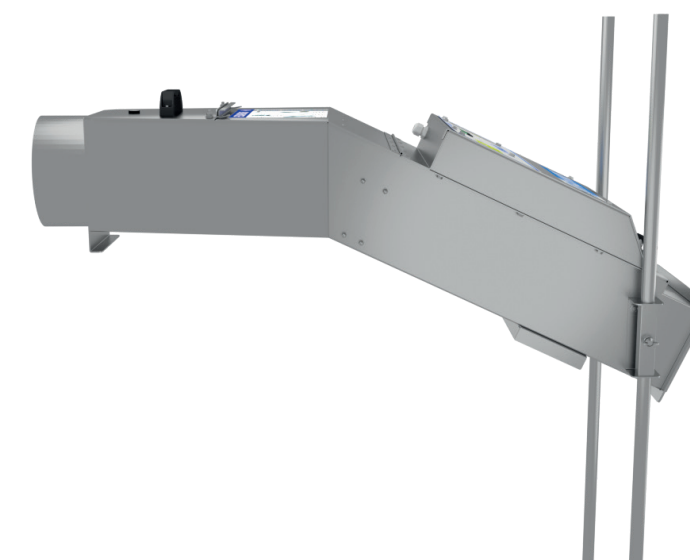
It is designed to be placed at the outlet of the grading machine, thereby centralizing the equipment and reducing the installation time.
With this system, no more counters at the end of the pipes.

Our Pescavision count many fish species such as:

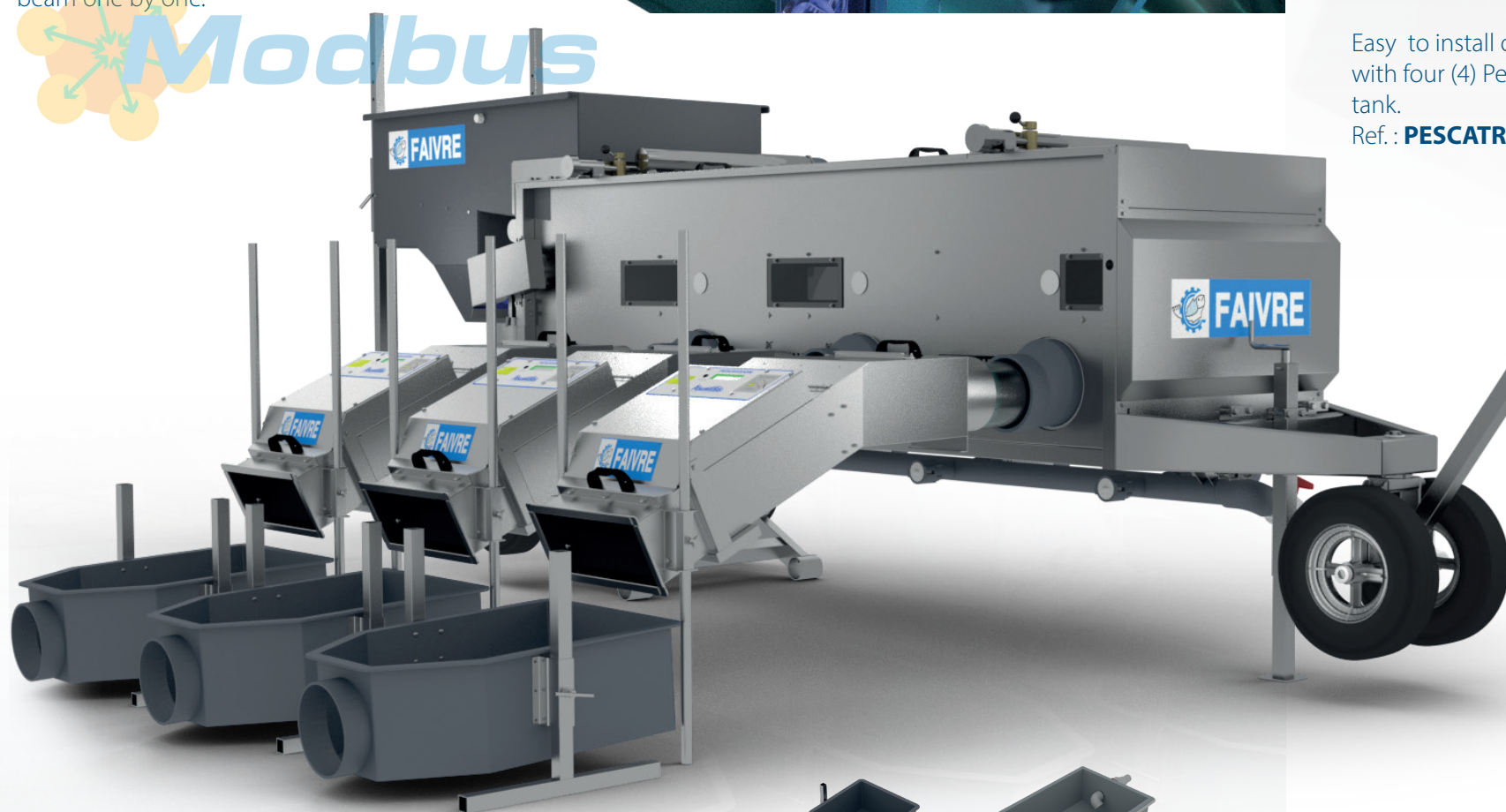
- Trout
- Salmon
- Tilapia
- Carps
- Perch
- Sea Bass
- Sea Bream
- Etc...



The Pescavision 50 as 2 counting channels



The principle behind this counter is simple. A beam emitted by a LED crosses each the channel. The fish that go through the beam give a counting pulse. The fish dividers ensure that the fish go through the beam one by one.



Helios grader coupled with 3 Pescavision 50 fish counters and a reception tank

Reception tank for Pescavision :
- Ø 200 mm Ref. : **CBRC200**
- Ø 250mm Ref. : **CBRC250**

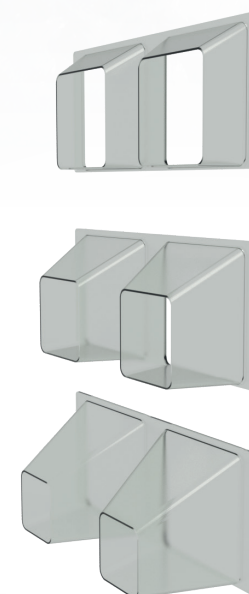
CBRC200

CBRC250



A NEW optional control box to centralize counting information up to 4 fish counters
Ref. : **PESCA4CO** (see page 156)

Easy to install on the farm with our new counting station with four (4) Pescavision fish counters and a reception tank.
Ref. : **PESCATROL**



Easy to use !
Large touch screen and a counter display.
All informations in only one display :
- Number of fish for each counter
- Total number of fish
- History of the 5 last counting sessions.
- Counting time



*Download the counting report on your PC with the USB key.

(*Control Box only)

Description

- ① Fish counter inlet female Ø 200 mm
- ② Fish dividers (Our fish counter is delivered with 3 fish dividers)
- ③ Fish counter body in marine grade aluminum
- ④ Channel access with cover
- ⑤ LCD display : number of fish
- ⑥ Counter feet
- ⑦ Carry handles
- ⑧ Fish counter outlet



Specifications

Fish counter model	PESCAVISION 50	
Fish species	Trout Salmon	Bass/Bream/ Tilapia
Fish weight	300 g to 3,5 kg	300 g to 1,5 kg
Capacity (maxi)	4 t/h	
Number of channels	2	
Channel width	200 mm	
Connection diameter	200 mm	
Accuracy	98 % - 100 %	
Weight	24 kg - 53 lbs	
Voltage 50/60 Hz	Delivered with 110-240 V/24 V power supply	
Reference (Fresh and sea water)	PESCA50	

